

SolarVu™ Installation Guide for Fronius IG Plus V ModBus Inverters

Introduction

SolarVu™ is an energy portal that enables remote monitoring of renewable energy generation sites over the internet. It requires the installation of a K135 gateway which continuously transfers data from the inverters to the remote SolarVu servers. This guide explains how to connect the K135 gateway to Fronius IG Plus V 3.0 - 12.0 inverters with the ModBus communication option card. Several steps are required:

- 1) Connect the K135 gateway to the inverters
- 2) Connect the K135 gateway to the building LAN for internet access
- 3) Enter the communications settings into each inverter
- 4) Access SolarVu from a browser and configure the energy portal

Site Preparation

To access SolarVu from a browser, the inverters communicate serially with a Cachelan K135 gateway connected to the site network as shown in fig 1. Each inverter requires an optional ModBus 485 comms card, Fronius #4,240,021,Z that must be purchased from Fronius and plugged in to the inverter. Each comms card has screw terminals for 485 serial connection. The K135 connects to inverters over RS485 using twisted pair wire, typically using Cat5e cables, daisy chained for multiple inverters. The LAN must have high speed internet service to an ISP to provide access to the internet. The K135 RJ45 ethernet jack plugs into an RJ45 LAN jack connected to the building router using a standard Cat5e patch cable. Alternatively, SolarVu can be ordered with a 3G cellular modem for wireless internet connection. A source of 120VAC for control power needs to be connected to the SolarVu enclosure.

K135 Installation

Mount the SolarVu enclosure containing the K135 gateway in a suitable location, typically in the electrical room near the inverters. The NEMA4 enclosure can also be mounted outdoors if preferred. The RS485 serial cable can run long distances, over 1000 feet, if necessary.

Power Supply: Source the 120VAC supply from a 15 amp breaker electrical circuit suitable for control power and connect to the internal junction box as shown in fig 2. Refasten the reusable dongle tie wrap after wiring to prevent it becoming loose over time.

RS485 Serial: Connect the RS485 serial cat5e cable to the K135 terminal board as shown in fig 3 being careful to match the correct wire colours to the terminals. Recommended cable type is Cat5e, 8 wire, UTP, #24 solid. Twisted pair must be used for the RS485 serial data wires. Use a tie wrap to provide strain relief for the cat5e cable. The ground wire is internally connected to terminal 4 to provide a path for transient protection. Connect the other end of the serial cable to the first inverter as shown in fig 4. Over 1000 feet of wire can be used for reliable serial communications.

Ethernet: Use a standard ethernet patch cable with RJ45 plug on each end of the appropriate length to connect from the RJ45 ethernet jack on the K135 gateway to the network ethernet at a RJ45 wall jack or router/switch. The network router must be configured to match the K135 IP settings. This is usually auto IP assignment using DHCP for small sites but a larger commercial organization may require static IP settings specified by the IT system administrator. This should be specified at time of order. Settings as shipped can be verified from the SolarVu configuration sheet included in the enclosure document pouch. Alternatively, SolarVu can be ordered with a 3G cellular modem/router installed for wireless connection. This requires installation of a customer supplied SIM card with an active telco account for service.

Fig 1 Internet Connection for single 10kW inverter

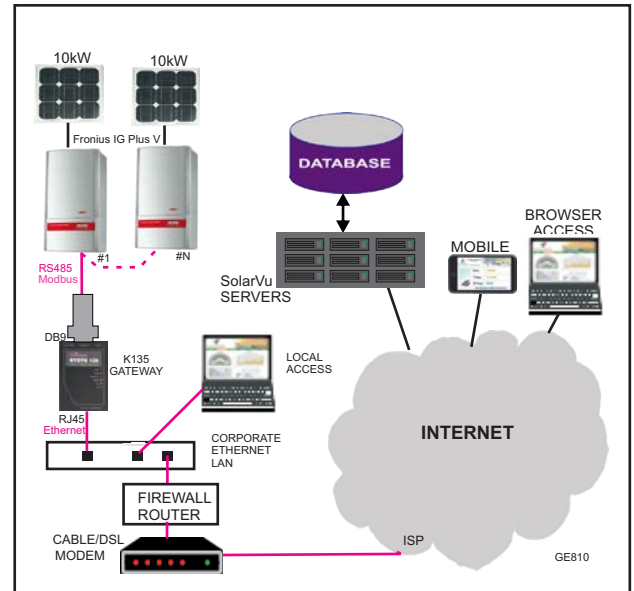


Fig 2 SolarVu enclosure wiring

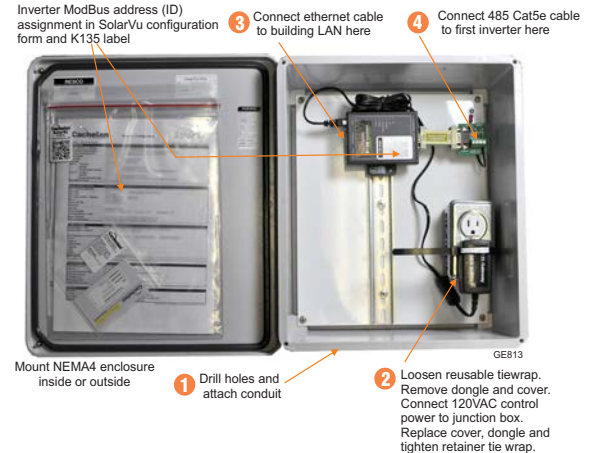
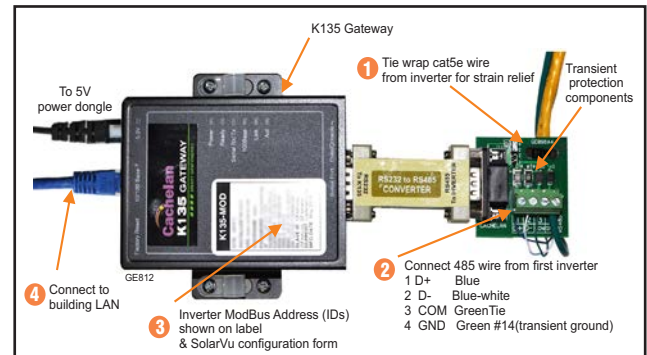


Fig 3 K135 Gateway connection



Inverter Connection

An optional ModBus communication card Fronius part #4,240,021,Z must be ordered for each inverter. It has to be configured and installed for communications to work. See fig 4 for layout and setup steps. Verify that the terminator plugs that ship with the board are installed in the IN and OUT jacks. Consult the SolarVu configuration form or K135 gateway label for the required inverter ModBus addresses (IDs) usually 1,2... Each inverter requires a unique ModBus ID which matches the address sent by the K135 gateway. Set the first inverter to the lowest address using the 2 rotary switches. Set each subsequent inverter to the next highest address. Communication between SolarVu and the inverters will not work if an address is duplicated or does not match the SolarVu specified values.

Install the communication jumpers for 2 wire RS485, no termination. The baud rate is fixed at 9600 and does not require setup. Route the RS485 cat5e cable from the K135 gateway into the first inverter and make a daisy chain connection to the next inverter. Avoid a star connection between inverters or data integrity may be compromised. Be careful to match the colours and terminals at each connection point. When the serial connector wiring is complete, plug the ModBus com card into the motherboard connector as shown in fig 5. Replace the board retaining cover. For further details see the Fronius ModBus Card installation manual part #42,0410,1867 that ships with the ModBus card.

The final step is to apply DC power to each inverter and verify using the front panel display that the protocol is set to DATcom.

Fig 4 Fronius ModBus card setup and 485 connection

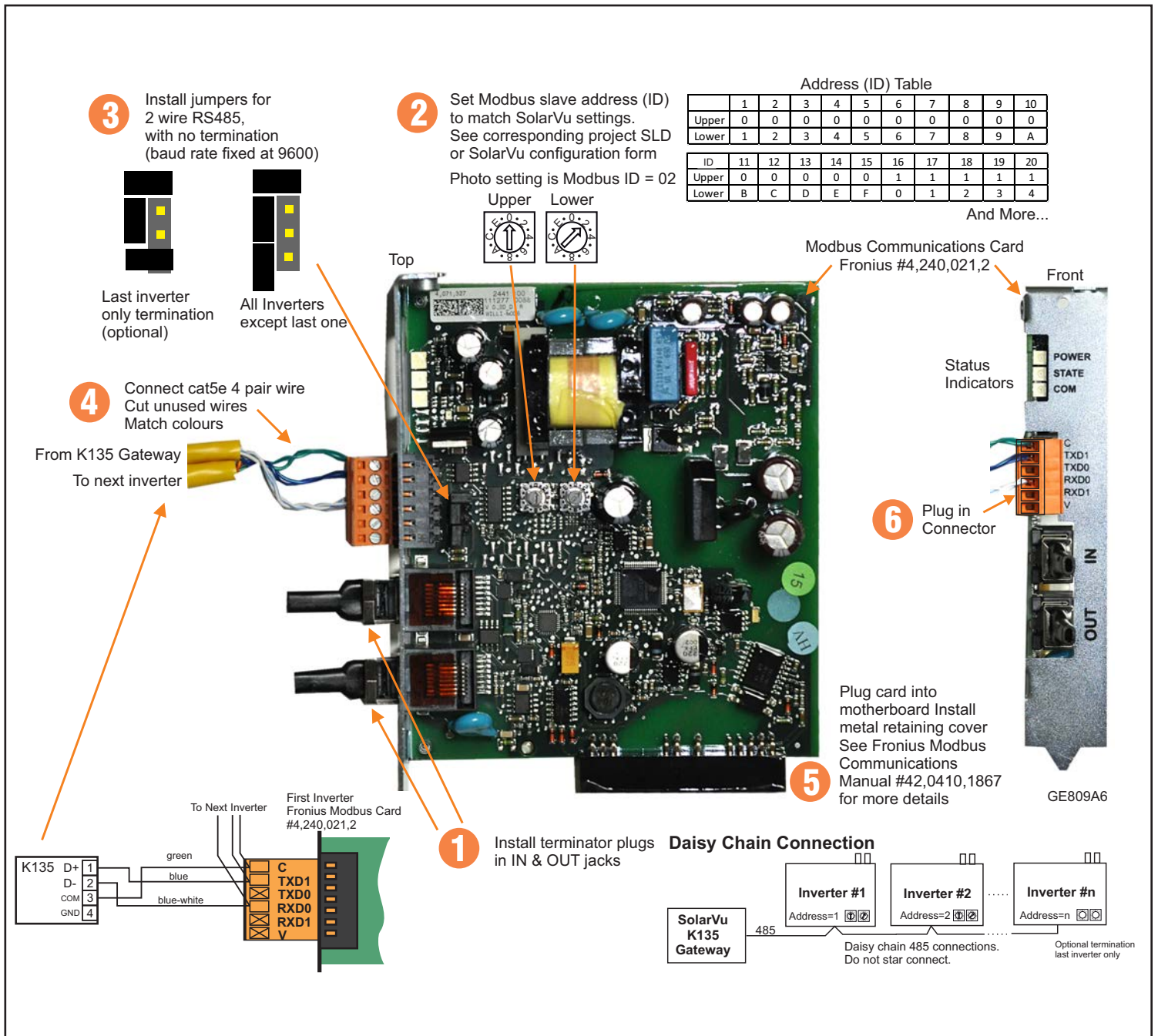


Fig 5 Installing ModBus card in inverter

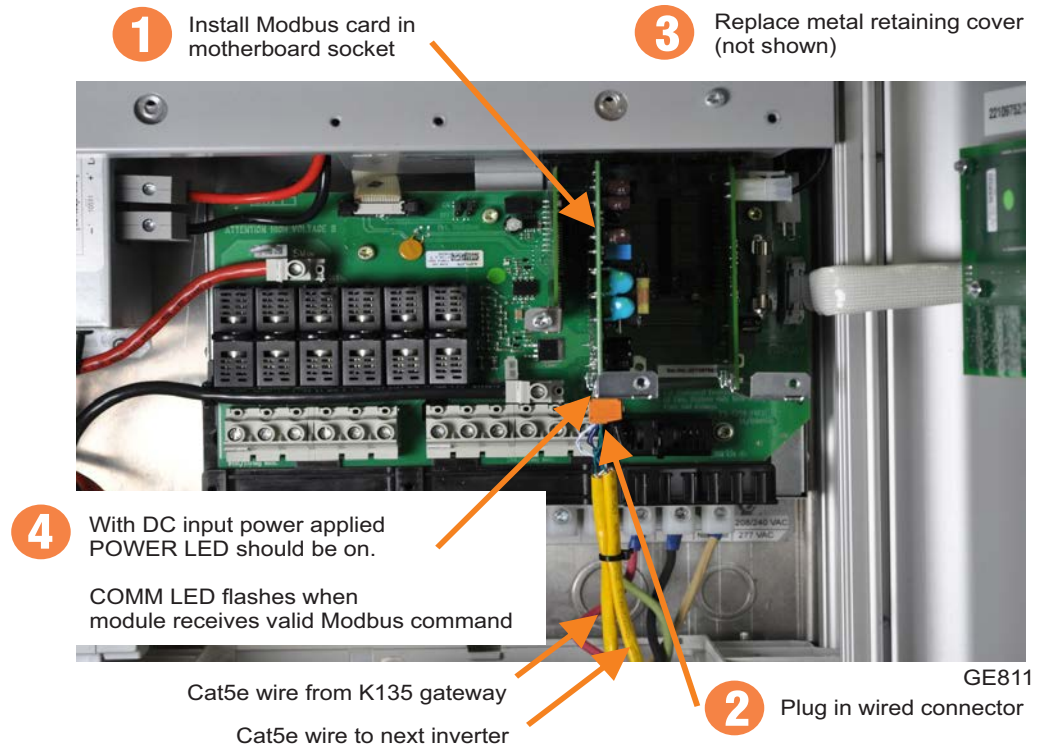


Fig 6 See Fronius IG Inverter manual for communications settings programming instructions

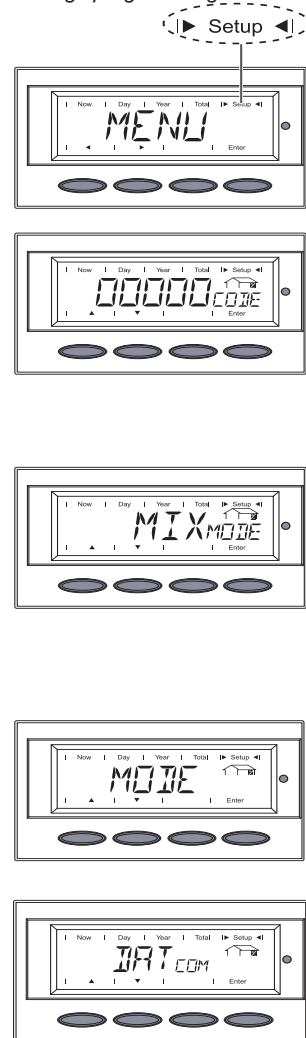
Inverter Protocol Setting

Each inverter must be configured with a unique ModBus address (ID) using the address switches on the ModBus comm card. The correct protocol must be selected for each inverter using the front panel keys and display.

Access Code: 22742
Interface Protocol: DATcom
Baud Rate: Fixed at 9600-8-N-1

Protocol Setting To access the front panel display, DC power must be applied to the inverter. With the display active follow the steps in fig 6 to reach the protocol selection screen. Use the Up/Down keys to select DATcom protocol, necessary for ModBus communications. After clicking Enter, with MODE displayed, access the protocol screen again and verify that DATcom was saved.

With the inverters and SolarVu enclosure powered on, the COM LED on the bottom of the Modbus card (fig 4) should periodically flash to indicate the card is being addressed by the K135 gateway. It should now be possible to view all the inverters in SolarVu.



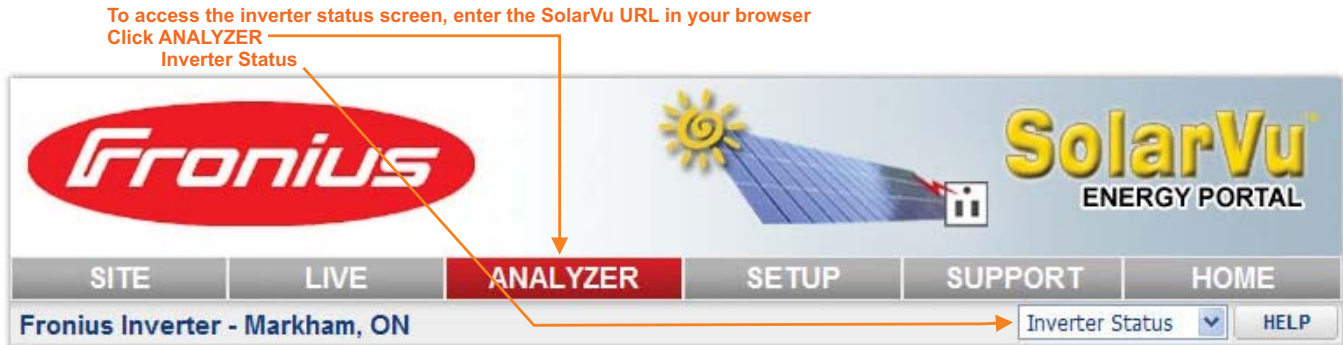
1. Switch to the menu level (press the 'Menu' key)
 2. Select the 'Setup' (1) mode using the 'Left' or 'Right' keys
 ◀ ▶
 3. Press the 'Enter' key
 - 'Standby' is displayed
 4. Immediately press the 'Menu' key five times
 - „0000 CODE” is displayed
 5. Use the 'Up' and 'Down' keys to change the flashing number
 ▲ ▼
 6. Confirm the number using the 'Enter' key
 7. Enter code 22742
 8. After entering all numbers, press the 'Enter' key
 - Display flashes
 9. Press the 'Enter' key again
 - 'MIX Mode' is displayed
- Important** 'DC_{Mode}' is displayed for inverters with only one power module.
10. Use the 'Up' and 'Down' keys to select 'COMM'
 ▲ ▼
 11. Confirm using the 'Enter' key
 - 'MODE' is displayed
 12. Confirm using the 'Enter' key
 -
 13. Use the 'Up' and 'Down' keys to select 'Dat com (do not select IFP)
 ▲ ▼
 14. Confirm using the 'Enter' key
 - The protocol type has been changed
 - 'MODE' is displayed

Testing the System

At this point the installation should be complete ready for testing. It is helpful to have access to a PC that is connected to the internet for viewing SolarVu screens. Using the URL supplied for the system. The K135 is preconfigured to automatically send inverter data to the SolarVu servers. To do this it must first establish an internet connection. Then it will collect data from the inverters and periodically transmit it.

Verifying correct operation is described in the sections that follow. Indicator lights and actual values accessible from the SolarVu Analyzer > Inverter Status screen figure 7 are useful for determining the status of the system.

Fig 7 Use the ANALYZER > Inverter Status screen to check system status



Time of last update received from the K135 gateway → Thursday, August 4, 2011 6:17:41 PM (GMT -5:00)

Fronius IG Plus V 10.0-3 (Device ID : 2) ← Inverter Identification

Power Now 619 W	DC Input	Power	656 W	Voltage	386 V	Current	1.7 A	
	AC Output	Power	619 W	Voltage	217 V	Current	2.9 A	
Lifetime Energy 28.0 kWh		Efficiency	94%	Frequency	60.0 Hz			
	Phase	Current 1	0.0 A	Current 2	2.9 A	Current 3	0.0 A	
		Voltage 1	215 V	Voltage 2	217 V	Voltage 3	215 V	
	Inverter	Fronius IG Plus V 10.0-3 Delta					Total Time	51.6 h
	Status	Operation						

Measured values from the inverter

Listen Last Data Updated: **Aug 4, 2011, Thu 6:00 PM (GMT -5:00)**

Listen Last Communication: **Aug 4, 2011, Thu 6:00 PM (GMT -5:00)**

Alarms and status reported by inverter **GE738**

Light is green if K135 is reading valid data from the inverter over RS485.
K135 must be connected to the internet.

Light does green if K135 is connected to the internet

Time of last communication.
K135 sends an update every

Network Setup

If automatic IP assignment is used, on power up, the K135 looks for a DHCP server to provide it a dynamic IP address. If a PC connected to the network can automatically connect to the internet through a browser then the network is already configured to accept the K135. Otherwise consult the IT systems administrator for assistance. If a dedicated IP address, subnet mask and DNS server address are required, this needs to be entered into the K135 before shipment. Once the K135 receives its IP address it acts as a client. It will automatically try to connect to the SolarVu™ server and begin transferring data from the inverter to the server.

K135 indicators and connections



Testing

Ensure the inverters and K135 are powered on, the ethernet cable is plugged into a network jack and the RS485 cable is connected between the K135 and the inverter(s). The Power and Ready lights should be on if the power supply is plugged in. The Link light indicates the ethernet connection is working. 100Base will only be on for high speed connections; for 10Base it is off. The Act light will periodically flash showing network activity. The Serial Rx/Tx flashes when the inverter is polled by the K135 but most of the time the light is off.

Internet Connection

Power on the K135 and allow at least 2 minutes for communication to be established. From any internet connected computer, open the browser and type in the SolarVu site address assigned for your account. This will be found on the account label shipped with the K135 and on the front panel of the K135. It is in the format *www.mysitename.solarvu.net*

Once the SolarVu energy portal is reached, the opening screen is the SITE view. Click ANALYZER > INVERTER STATUS. If there is a connection from the site, the Last Communication light will be green. The K135 gateway does not need to be connected to the inverter for this light to be green. If this indicator is red, it indicates no internet connection has been established. Check internet connections at the site by trying to browse the internet at the site with a PC connected to the network.

On a new system, the K135 gateway will search for the address of each connected inverter. When found, the Last Data Updated indicator will be green and inverter data will appear. If this indicator is red but the Last Communication indicator is green, check the RS485 serial connection to the inverter and that unique slave IDs have been entered. When both lights are green the gages on the SITE screen will display live data and graphs will begin recording site energy output. Contact Cachelan Technical Support for assistance if you cannot get a connection.

K135 Status Indicator Interpretation

INDICATOR STATUS		
LED	NORMAL	STATUS
POWER	ON	OFF- no power ON-power OK
READY	ON	ON IP address valid OFF No DHCP or static IP address.
SERIAL	RED FLASH GREEN FLASH	OFF Check K135 to inverter connection, inverter address & baud rate. No AC/DC to Inverter. RED flash=K135 Transmit data, Green flash=Receive data
100Base	ON	ON- 100Base OFF- 10Base or no ethernet
Link	ON	ON - ethernet network connection OK OFF No ethernet connection
Activity	SHORT FLASH	FLASH - data traffic activity

TROUBLESHOOTING CHECKLIST

IP	Obtain IP by DHCP or set static IP. Network configured to recognize K135
Serial	Check serial cable between inverter & K135 Correct inverter communications settings.
Inverter	Inverter has AC and DC power on.
Internet	Internet connection from ISP to LAN is operating normally
K135	K135 in data mode (red switch set to left viewed from top)
Support	Technical support: contactus@cachelan.com

K135 front panel label with web address and login

K135 GATEWAY	
URL:	<i>mysite.solarvu.net</i>
USER:	myusername
PASSWORD:	mypassword
IP:	DHCP
MAC:	00-01-95-06-E8-33
ID:	SS100 070300075 v1.4.1
TYPE:	

Check ANALYSER > INVERTER STATUS for communication
Screen shots may vary by inverter type

DC INPUT	POWER	1,013.0 W	Volts	295.3 V	Amps	3.43 A
AC OUTPUT	POWER	898.0 W	Volts	212.4 V	Amps	4.37 A
PERFORMANCE	Efficiency	88.6 %	Frequency	60.0 Hz	Heat Sink	36 C
TODAY	Energy	5,325 Whr	Max Power	3.35 kW	Online	06h 27m
LIFETIME	Energy	8,150 kWh	Revenue	\$ 3,423.00	Run Time	607 Days
	Listen	Last Data Updated:		Feb 26, 2009, Thu 1:42 PM (GMT -5:00)		
	Listen	Last Communication:		Feb 26, 2009, Thu 1:42 PM (GMT -5:00)		

LIVE - for valid data, green status light and time received

PEAK					
	0%	25%	50%	75%	100%
POWER NOW	0				Watts
REVENUE TODAY	\$1.01				CAD
LIFETIME ENERGY	16				MWh
TOTAL REVENUE	\$6,480.80				CAD
<div style="text-align: center;"> SYSTEM OK Listen </div>					
Last Updated: Feb 18, 2009, Wed 4:42 PM (GMT -5:00)					

Video Tour

For an overview of available features, visit www.solarvu.net and play the What is SolarVu video. Each screen has a HELP button that explains how all the features work. An online help guide is available for printing under SETUP > DOWNLOADS > PRINTED HELP .

Visit www.solarvu.net for a features video



Help guide



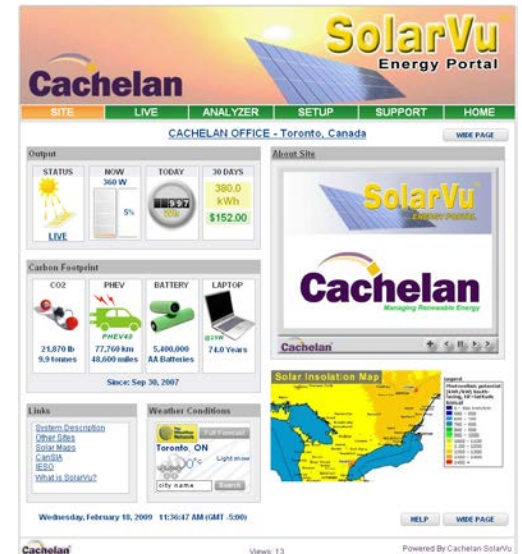
Site Screen

For a summary of information about the site, click the SITE menu button. On the upper left, the current charging status of the solar panels, total power being generated now and in the last 30 days is displayed. Underneath, the carbon footprint of energy equivalents is displayed since startup. Links to other websites can be left as defaults or changed in SETUP to personal preferences. The local weather is preset. Email contactus@cachelan.com to have it changed. For viewing on a widescreen TV suitable for display in a public place, click the WIDE PAGE button. On the right is a slideshow for public viewing. Content can be personalized using uploaded graphics in SETUP.



Select wide screen view for public display on an HDTV

Site Summary Screen

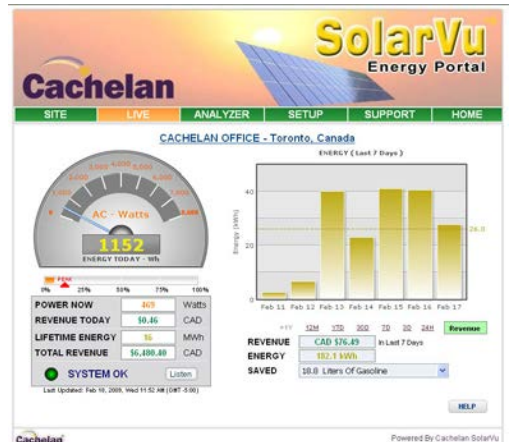


LIVE view shows current conditions

Live Data

Click the LIVE menu button to display current power being generated in the array. Actual power and energy generated today are shown on the meter dial. For a normally operating system, the status indicator should be green with the last update time less than 15 minutes ago. Lifetime energy and revenue are shown digitally. For correct revenue display, the sell price per kWh must be entered in SETUP. If connection to the site is lost, or if an alarm is detected, the status indicator will be red. Click the Listen button with sound on for more information.

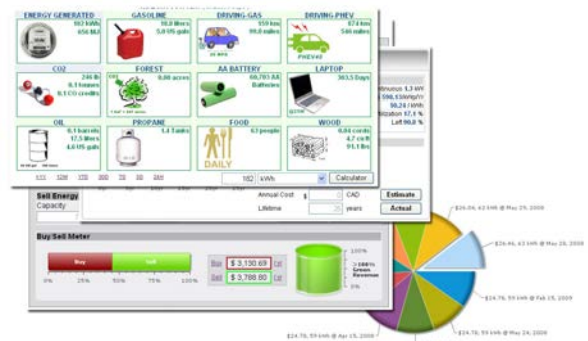
Trends are shown for the lifetime of the system using the graphs on the right. Select either an Energy or Revenue view using the button. Click the desired time period under the graph. Scroll over a data point with the mouse for more detailed information about that day. The carbon footprint pulldown gives energy equivalents for the solar power generated for the selected time period.



Analyzer - Performance

Click the ANALYZER menu button and select a category in the pulldown menu and a time period under the graph. The carbon footprint will compute the energy equivalents to the solar energy generated over the selected time period. This helps visitors get a practical feel for the benefits available. To find the carbon equivalent for an arbitrary value, override the actual solar amount by entering a kWh value and selecting a category, then click the Calculator button. Other views including buy/sell energy use, performance and payback can be selected with in the pulldown menu. The screen will return to the last value selected on return.

ANALYSER - select performance views from pulldown



Analyzer - Troubleshooting

When problems occur with the system or to check inverter operation, click ANALYZER > INVERTER STATUS. Each inverter connected to the system with a K135 gateway will have its own display panel showing actual values sent. Remotely located technical personnel can assist in interpreting what the values are conveying. If no communication has been received from the device for more than 2 hours a No Data Available message will be shown.

For detailed analysis, it may be helpful to download all readings for the time period of interest into a spreadsheet for further analysis using SETUP > DOWNLOAD.



Download printable HELP guide or actual readings for any time period

Setup

For entering settings to configure your site, click the SETUP menu button. Enter your unique username and password from the account label. The setup screen appears showing communication status and current preference settings. Check the last communication time ❶. It should show a time within the last 15 minutes if communication between the site and SolarVu™ server is working normally.

For the payback and revenue calculators to work properly, correct parameters for energy sell rate, capacity, average insolation etc should be entered. Account > Equipment Setup is for factory use. All changes take immediate effect. The Site Setup tab is used to customize the banner, links, slideshow and system description. Click the Help ❷ button for each section for a description of the effect for each entry. For further analysis, individual energy readings for any time period can be downloaded into a spreadsheet from the DOWNLOAD section.

Enter the email address ❸ for each individual that wants a regular status report sent to them and select the frequency. This report will include energy and revenues for different time periods and indicate if there are any alarms. In the Password tab, include an email address to receive the Setup login password if this is forgotten.



Support

See the What is SolarVu? video at www.solarvu.net for a feature overview. Each screen has a HELP button with details for the items on that view. A printable HELP guide can be downloaded in SETUP > DOWNLOAD.

For additional technical support, send an email to contactus@cachelan.com or dial our support line in Toronto, Canada at 905.470.8400

Click ANALYZER > INVERTER STATUS for troubleshooting

Lifetime Energy 1,800 Whr	AC Output	Power	0 W	Vrms (L1-L2)	217 V	Current	0.0 A
		Vrms (L1-N)	125 V	Vrms (L2-N)	132 V	Frequency	60.0 Hz
AC Output Power 0 W	DC Input	Power	33 W	Volts	349 V	Current	0.1 A
	Performance	Power Efficiency	0 %	Heatsink Temp.	29 °C		
PV Input Power 33 W	Lifetime	Today On-Grid	2.2 Hrs	Lifetime	13.5 Hrs	Relay Cycle	36
	Inverter	DC Input	2,700 Whr	AC Output	1,800 Whr	Efficiency	67 %
	Status	Model	PVI 5000	S/N	10010063	RS485 Address	15
		Hardware Ver.	65	DSP1 Ver.	1.40	DSP2 Ver.	1.18
		Fault mode Vact - The AC voltage of mains utility is over the upper limit Vact - The AC voltage of mains utility is under the lower limit COM - External communication failed warning message Vact2 N - The voltage between L2 and neutral is exceeding the upper limit					

Listen Last Data Updated: **Apr 19, 2010, Mon 11:54 AM (GMT -5:00)**
Listen No Communication Since: **Apr 16, 2010, Fri 3:54 PM (GMT -5:00)**

See K135 label for SETUP login

Customer Login

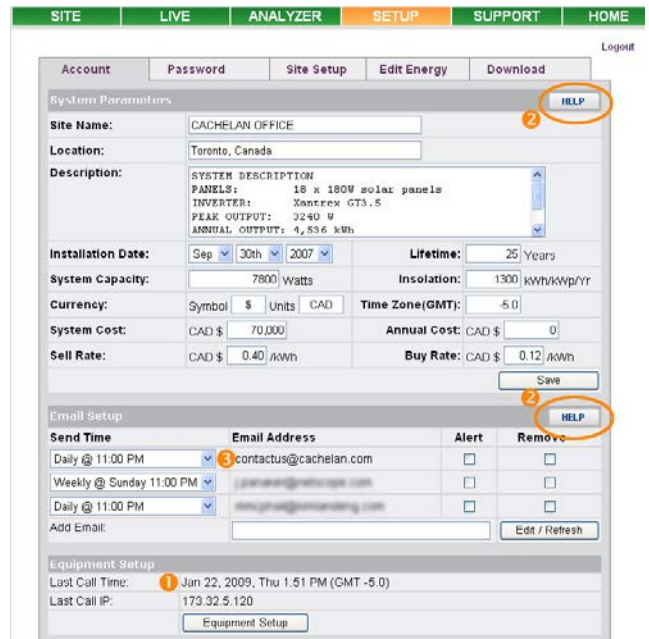
Username

Password

[Forgot your password?](#)

K135 GATEWAY	
URL:	mysite.solarvu.net
USER:	myusername
PASSWORD:	mypassword
IP:	DHCP
MAC:	00-01-95-06-E8-33
ID:	SS100 070300075 v1.4.1
TYPE:	
DATE:	Feb 2009
SUPPORT:	cachelan.com

Configure site settings in SETUP



Cachelan Technical Support
contactus@cachelan.com
905.470.8400 x228